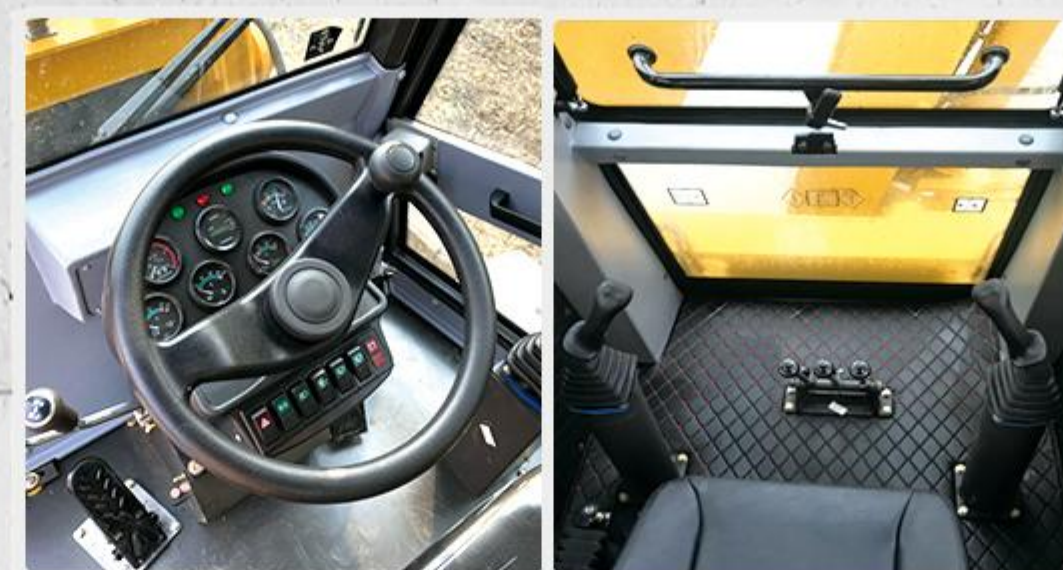




Adopt integral frame made by Q345-C high-strength steel, make the whole machine more stable, and suitable for excavating.



Wide view cabin



Split instrument design, more convenient maintenance; joystick operation



Deluxe interior, adjustable suspension seat,



Overall Size

Operating Weight	8200kg
Overall Dimension	6230×2365×3752mm
Wheel base	2250mm
Min. Ground Clearance	300mm

Performance

Breakout Force	<42KN
Loading lifting capacity	2500kg
Front Bucket Capacity	1.0 m ³
Bucket Dumping Height	2650mm
Bucket Dumping Distance	1025mm
Digging Height	3878mm
Backhoe Capacity	0.3cbm
Max. Digging Depth	4080~4500mm
Single angle of excavator grab	190°
Max. pulling force	>40KN

Engine

Brand	Yuchai YC4A105Z-T20
Type	Turbo charged
No. of Cylinder-Bore/Stroke	4-108x132
Rated Power	75kw/102HP
Max. torque	400 N.m
Displacement	4.3L
Rated Speed	2200r/min
Min. Fuel Consumption	235g/Kw-h

Tires

Size	14-17.5/19.5L-24
------	------------------

Steering system

Model of steering system	BZZ5-250
Steering angle	±36°
Mini turning radius	5882mm
Pressure of the system	12MPa

System Pressure

Loading Hydraulic System	16MPa
Digging Hydraulic System	18MPa

Axle

Main transmission type	Arc Bevel Gear First Reduction
Final reduction	Single Row Planetary Reduction

Transmission system

Torque converter	YJ280
Gearbox	Fixed shaft power transmission
Gears	F2/R2
Max. speed	28Km/h

Brake system

Service brake	Air over oil caliper brake
Parking brake	Manual disk brake

Hydraulic system

Digging power of excavator grab	46.5KN
Digging power of dipper	31KN