

# LT988 Wheel Loader

## 基本参数 Technical Parameters

型号 Model	LT988
操作重量 Operating Weight	25300KG
额定容量 Rated Capacity	8T
铲斗容量 Bucket Capacity	5.5~7m <sup>3</sup>
铲斗宽度 Bucket Width	3520 mm
轴距 Wheelbase	3350mm
轮距 Wheel Tread	2470mm
外形尺寸 Overall Dimension (L×W×H)	9100x3200x3640mm
最大卸载高度 Max. Dumping Height	3550mm
最大卸载距离 Max. Dumping Distance	1300mm
转向角 Turning Angle	35°±1°
最大爬坡能力 Max. Climbing Gradient	30°
最小转弯半径 Min. Turning Radius	7400mm
最大掘起力 Max. Breakout Force	175kN
最大扭矩 Max. Torque	1350N.m
举升时间 Lifting Time	≤6.5s
发动机 Engine	Weichai
额定功率 Rated Power	247Kw/2200r/min
液压缸时间 Hydraulic Cylinder Time	≤10.5s
轮胎尺寸 Tire Size	26.5-25
传动 Transmission	Beilian ZL80 fixed axle
档位 Gear Shift	Forward 4/Reverse 4



Optimise the bucket discharge plate structure, easy to discharge and reduce the impact; the service life is greatly extended.

优化铲斗卸料板结构, 便于卸料, 减少冲击; 使用寿命大幅度延长。



Adopting domestic well-know brand tyres, wear-resistant and reliable, applicable to a variety of harsh working conditions, efficient operation.

采用国内大牌轮胎, 耐磨可靠, 适用多种恶劣工况, 作业高效。



Adoption of high-power engines, gearboxes, drive axles and other core components, wider adaptability to working conditions and more reliable.

采用大功率发动机、变速箱、驱动桥等核心零部件, 工况适应性更广、更可靠。



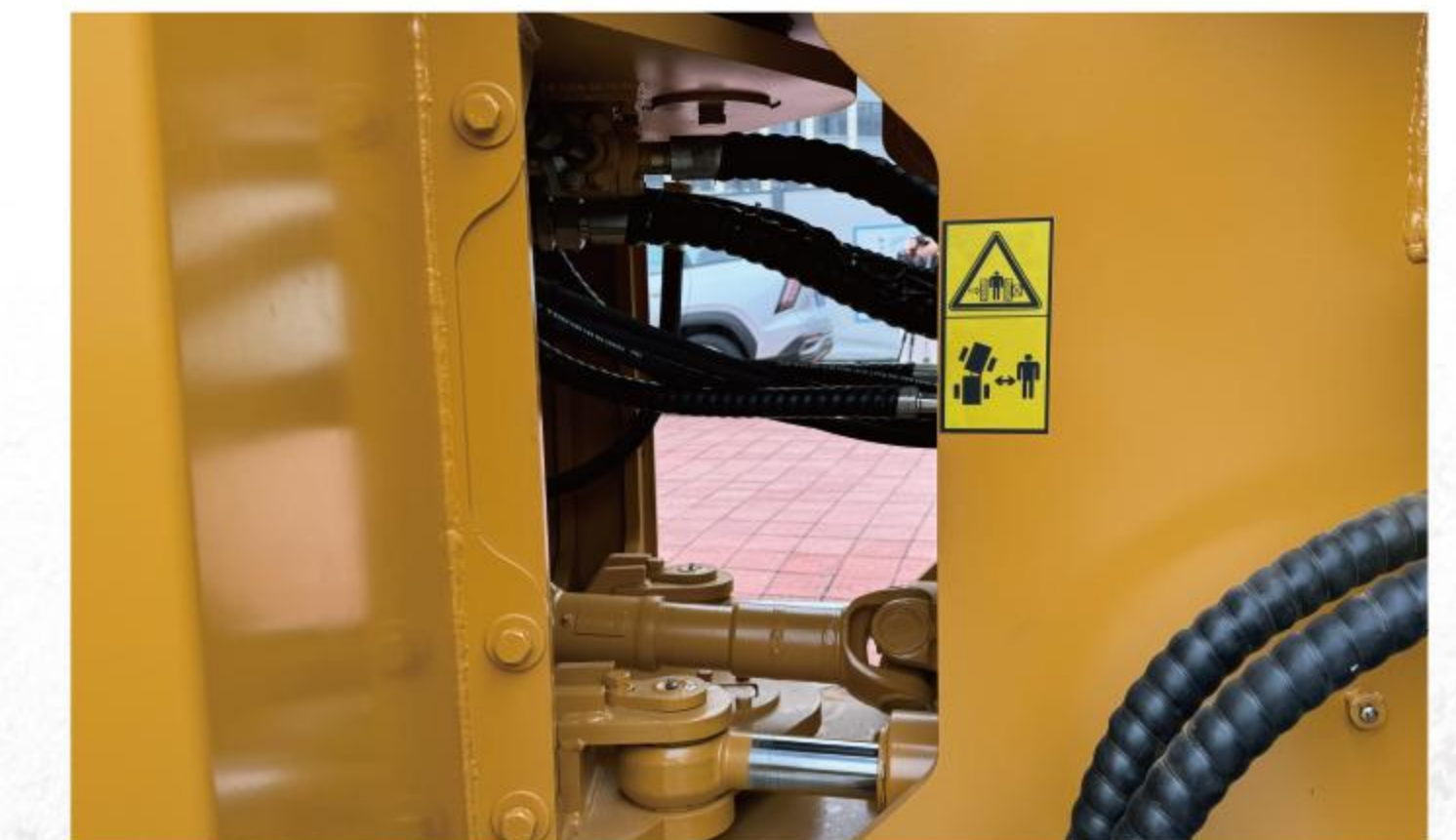
Ultra-quiet, monolithic cab with good sealing, more space and better view.

超静音、整体式驾驶室密封性好、空间更大、视野更好。



High-power electronically controlled engine with large torque reserve coefficient, strong power and high combustion efficiency.

大功率电控发动机, 扭矩储备系数大, 动力强劲, 燃烧效率高。



The front and rear frames adopt a large articulation and heavy-duty design that disperses the force at the articulation, reduces the load-bearing force of the articulation pins and improves the service life of the bearings.

前后车架采用大铰接、重载型设计分散了铰接处的作用力, 降低铰接销的承重力, 并提高轴承使用寿命。

