

LT978 Wheel Loader

基本参数 Technical Parameters

型号 Model	LT978
操作重量 Operating Weight	24300KG
额定容量 Rated Capacity	7T
铲斗容量 Bucket Capacity	6m ³
铲斗宽度 Bucket Width	3300~3500 mm
轴距 Wheelbase	3380mm
轮距 Wheel Tread	2280mm
外形尺寸 Overall Dimension (L×W×H)	8600X3230X3800mm
最大卸载高度 Max. Dumping Height	3460mm
最大卸载距离 Max. Dumping Distance	1300mm
转向角 Turning Angle	35°±1°
最大爬坡能力 Max. Climbing Gradient	30°
最小转弯半径 Min. Turning Radius	7400mm
最大掘起力 Max. Breakout Force	202kN
最大扭矩 Max. Torque	186N.m
举升时间 Lifting Time	≤6.5s
发动机 Engine	Weichai
额定功率 Rated Power	199KW/2200r/min
液压缸时间 Hydraulic Cylinder Time	≤12s
轮胎尺寸 Tire Size	26.5-25
传动 Transmission	Beilian ZL80 fixed axle
档位 Gear Shift	Forward 4/Reverse 4
油箱容量 Fuel Tank	230L
液压油箱容量 Hydraulic Oil Tank	230L



Honeycomb type heat dissipation hood, effectively improve heat dissipation performance.
蜂窝型散热器罩, 有效提高散热性能。



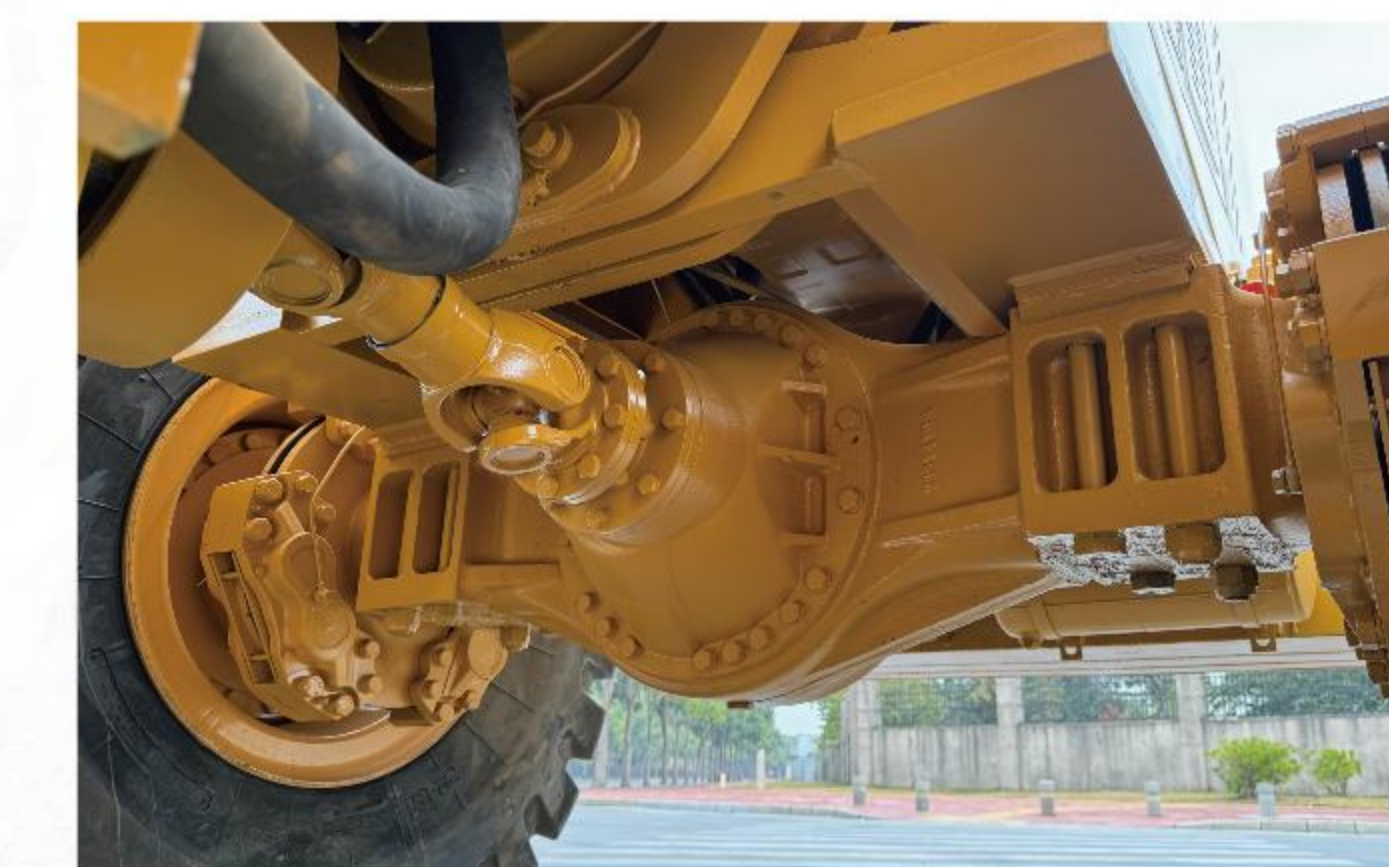
Adopting large-displacement double-pump merging hydraulic system, with large cylinder power, fast arm lifting and faster loading speed.
采用大排量双泵合流液压系统, 油缸力量大、举臂快、装车速度更快。



The front and rear frames adopt a large articulation and heavy-duty design that disperses the force at the articulation, reduces the load-bearing force of the articulation pins and improves the service life of the bearings.
前后车架采用大铰接、重载型设计分散了铰接处的作用力, 降低铰接销的承重力, 并提高轴承使用寿命。



Optimise the bucket discharge plate structure, easy to discharge and reduce the impact; the service life is greatly extended.
优化铲斗卸料板结构, 便于卸料, 减少冲击; 使用寿命大幅度延长。



Adoption of high-power engines, gearboxes, drive axles and other core components, wider adaptability to working conditions and more reliable.
采用大功率发动机、变速箱、驱动桥等核心零部件, 工况适应性更广、更可靠。



Ultra-quiet, monolithic cab with good sealing, more space and better view.
超静音、整体式驾驶室密封性好、空间更大、视野更好。

