

LT920 Wheel Loader

基本参数 Technical Parameters

型号 Model	LT920
额定容量 Rated Capacity	2000kg
操作重量 Operating Weight	5000kg
铲斗容量 Bucket Capacity	1.2m ³
最大卸载高度 Max. Dumping Height	3500mm
最大卸载距离 Max. Dumping Distance	1000mm
外形尺寸 Overall Dimension (L×W×H)	5650×2000×2750mm
最小转弯半径 Min. Turning Radius	3750mm
斗宽 Bucket Width	2050mm
发动机 Engine	Yunnei
额定功率 Rated Power	76KW
变矩器型式 Torque Converter Type	(infinitely variable speed)
变速箱类型 Transmission Type	265
档位 Gear Shift	4 forward, 4 reverse
最大速度 Max. Speed	36Km
轴距 Wheel Base	2330mm
轮距 Wheel Tread	1580mm
轮胎尺寸 Tire Size	16/70-20



Enhanced hydraulic cylinders for robust operation and powerful lifting effect.
增强型液压油缸, 实现稳健运作与强大举升效果。

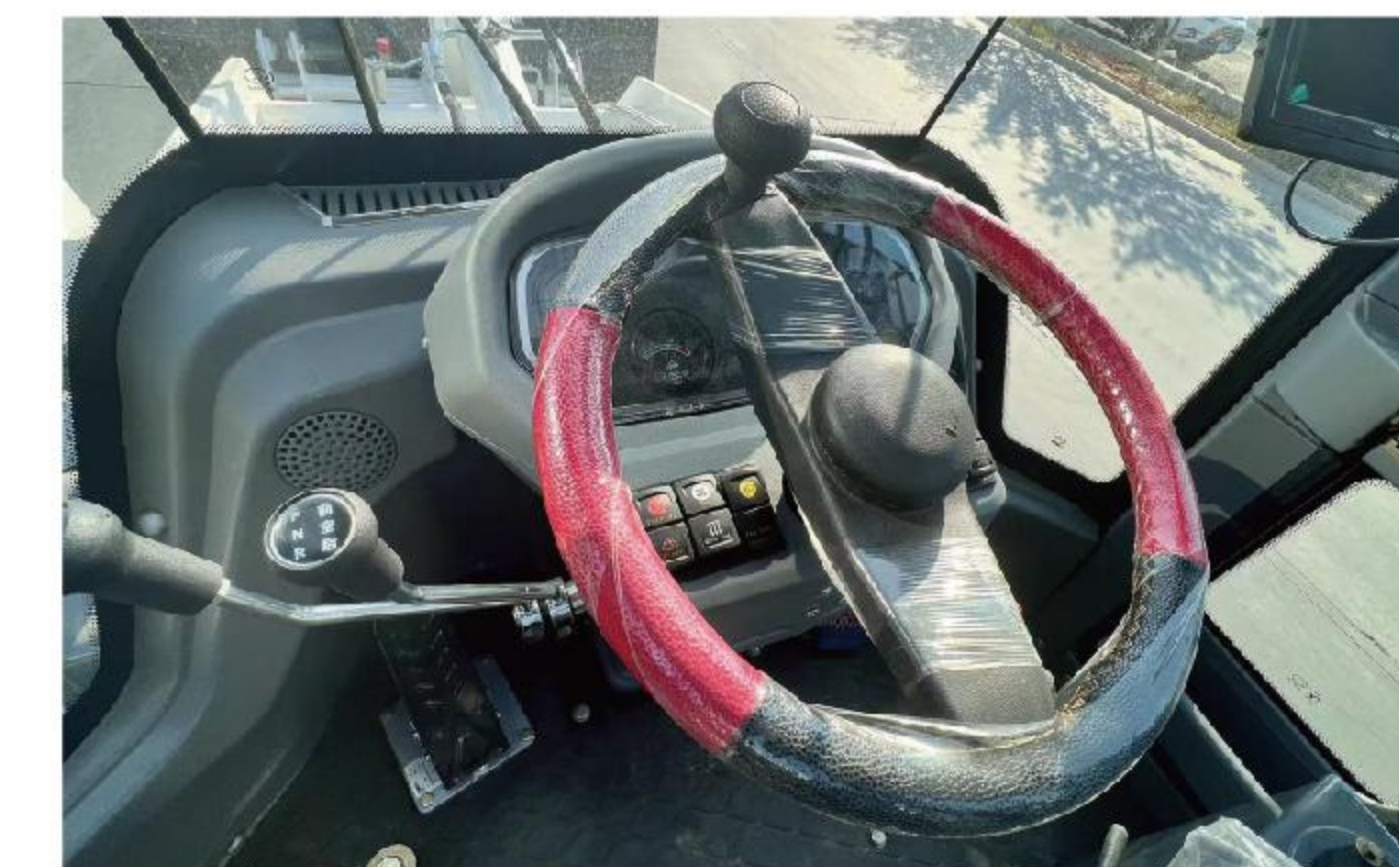


Equipped with high wear-resistant blade, which improves the service life of the bucket.
配备高耐磨的刀板, 提高了铲斗的使用寿命。



High-efficiency LED technology with high brightness and long irradiation distance ensures sufficient illumination at night or when working in dark places.

采用高效的LED技术, 亮度高、照射距离远, 确保夜间或暗处作业时能提供充足的照明。



New appearance, overall atmosphere and beautiful; more space inside the driver's seat, more comfortable to drive.
操作更简易, 实时监控整机情况, 安全防护。



Wing spread hood, large opening hood side door, spacious maintenance space, convenient daily maintenance.

翼展式机罩, 大开度机罩侧门, 养护空间宽敞, 日常维修保养便捷。



Featuring energy-saving and emission-reducing advantages along with powerful performance.

兼具节能减排优势与动力性能。

